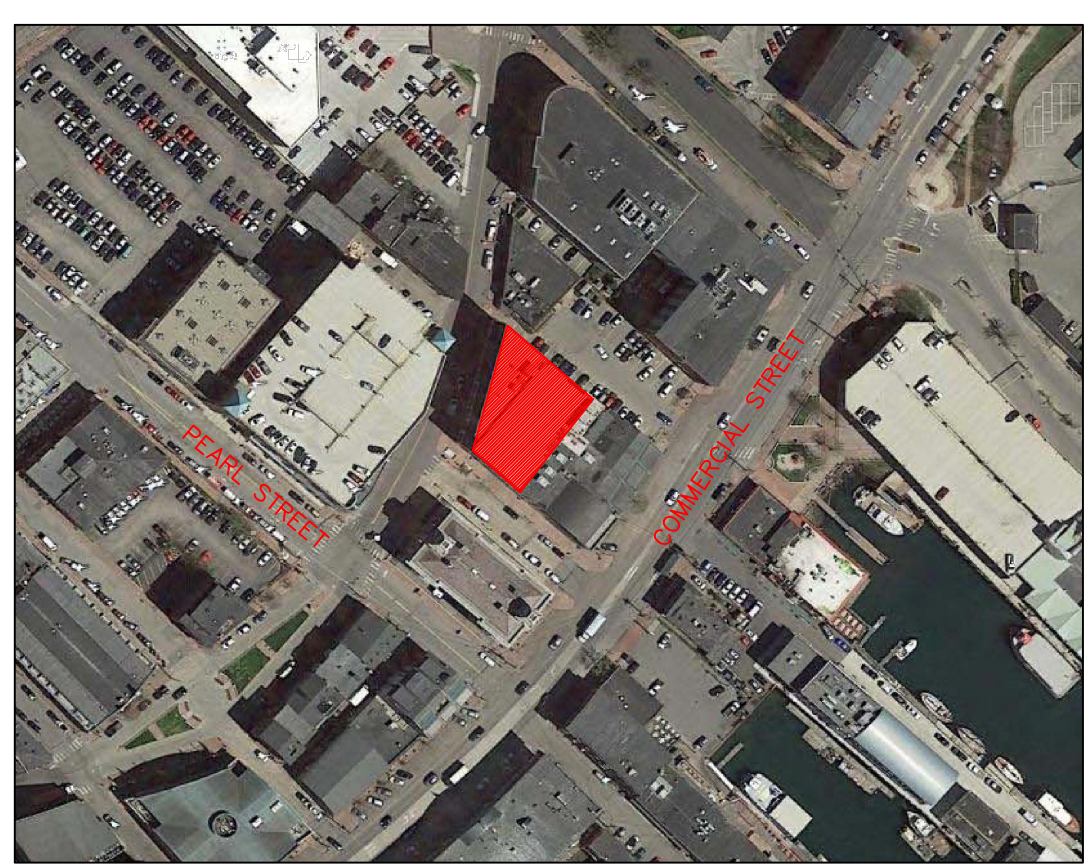


- 8
165'
 RELIABLE MODEL G5-56 - RA3415
 QUICK RESPONSE / STANDARD COVERAGE
 K=5.6, 1/2" NPT, CONCEALED PENDENT
 WHITE G4 COVER PLATE
- 8
155'
 RELIABLE MODEL F1FR56 - RA1414
 QUICK RESPONSE / STANDARD COVERAGE
 K=5.6, 1/2" NPT, BRASS PENDENT
- 25
155'
 RELIABLE MODEL F1FR QREC R4842
 QUICK RESPONSE / EXTENDED COVERAGE
 K=8.0, 3/4" NPT, BRASS PENDENT
 18x18 MAX SPACING
- 11
155'
 RELIABLE MODEL F1FR QREC R4842
 QUICK RESPONSE / EXTENDED COVERAGE
 K=8.0, 3/4" NPT, WHITE RECESSED PENDENT
 18x18 MAX SPACING

SYSTEM CLASSIFICATION
 RELOCATE EXISTING SPRINKLERS AND INSTALL NEW TO COVER THE RENOVATED MULTIPURPOSE SPACE. ALL EXISTING HEADS ARE TO BE REPLACED. THE SYSTEM IS TO BE DESIGNED AND INSTALLED IN ACCORDANCE WITH NFPA-13, STANDARD FOR THE INSTALLATION OF SPRINKLER SYSTEMS, 2016 EDITION.

WET SYSTEM GENERAL NOTES:
 ALL 1" TO 2" PIPE IS TO BE SCH. 40 BLACK STEEL U/N.
 ALL 2 1/2" TO 6" PIPE IS TO BE SCH. 10 BLACK STEEL U/N.
 ALL THREADED PIPE FITTINGS ARE TO BE BLACK CAST IRON, CLASS 125 U/N.
 ALL GROOVED PIPE FITTINGS ARE TO BE FACTORY ENAMEL U/N.
 DIMENSIONS SHOWN ON THREADED PIPE ARE CENTER TO CENTER U/N.
 DIMENSIONS SHOWN ON GROOVED PIPE ARE "CUT" LENGTHS U/N.
 PENDENT SPRINKLERS IN ACOUSTIC TILE CEILINGS NEED TO BE CENTERED IN ACOUSTIC TILES.
 SUFFICIENT HEAT TO PREVENT FREEZING OF THE WET PIPE SPRINKLER SYSTEM IS REQUIRED TO BE FURNISHED BY THE BUYER/OWNER.

- LEGEND:**
- UPRIGHT SPRINKLER ON A BRANCH LINE
 - ⊕ PENDENT SPRINKLER ON RETURN BEND
 - CONCEALED SPRINKLER ON RETURN BEND
 - EXTENDED COVERAGE PENDENT
 - RISE OR DROP
 - GROOVED COUPLING
 - EXISTING MAIN OR BRANCH LINE
 - HANGER
 - FF = X'-X" FINISHED FLOOR TO PIPE CENTERLINE
 - D = X'-X" DECK TO PIPE CENTERLINE



SITE LOCATION
 300 FORE STREET, PORTLAND, ME
 NOT TO SCALE

DANA A. STEWART
 NICET IV 064544

DEAN & ALLYN, INC.
 FIRE PROTECTION - SPECIAL HAZARD
 PO BOX 709, GRAY, MAINE 04039
 207/657-5646 FAX 207/657-5647

LEVEL B1 FIRE PROTECTION FP-01

APPROVED BY	SURVEYED BY	CAS	2/9/17	TITLE
	DRAWN BY	CAS	2/20/17	
	CHECKED BY			
	AT	DEAN & ALLYN, INC		
	SCALE	3/16" = 1'-0" U/N		
	SHEET NO.	1 OF 1		

CIEE
 HQ RENOVATIONS
 300 FORE STREET
 PORTLAND, MAINE 04101

NO. OF SPRINKLERS	52
NO. OF SPRINKLERS ON 2 1/2"	108
CONTRACT NO.	C171406